

Scavenger Hunt

1801 East Chestnut Avenue, Santa Ana, Ca 92701

www.santaanazoo.org

714-647-6562

As you explore the zoo, read the animal signs to find the answers to these questions.

Learning can be fun! Please keep in mind an animal might be off exhibit temporarily during construction.



1. The bald eagle is the national bird of the United States.
2. The Indian Crested Porcupine is covered in quills but cannot shoot them like arrows or throw them.



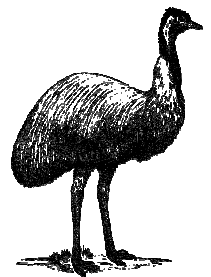
3. The scarlet ibis has bright red feathers because of their crustacean filled diet.
4. The great horned owl is a bird of prey named for its feathered 'ear tufts'.
5. This mammal, a gibbon, swings (brachiates) through the forest each morning with a loud morning call to claim its territory.
6. Found in the rainforest of Brazil, this tiny monkey is highly endangered with only 400 found in the wild. It is a golden lion tamarin.

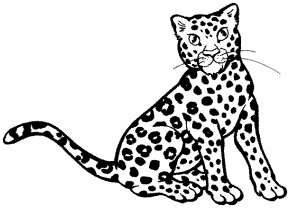


7. The ring tailed lemur uses its ring tail like a flag for communication and marks its territory using scent glands.
8. Neither a bear nor a cat, the binturong uses its prehensile tail for balance in the trees. It excretes a musk that smells like buttered popcorn.
9. The emu is the second largest bird in the world and can run up to 30 mph.

10. Found in Australian swamps and forests, the wallaby uses its powerful legs to hop. It is related to the kangaroo.

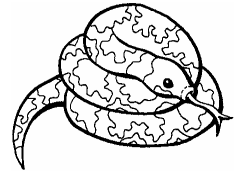
11. The guanaco is an ancestor to the llama and may spit when upset.
12. The titi monkeys creates strong family bonds. They can sometimes be found sitting together with their tails intertwined.





13. The margay is an arboreal cat that can rotate its ankles 180 degrees to climb down the tree head first.

14. The boa constrictor is a South American snake that can grow to be 10 ft long!

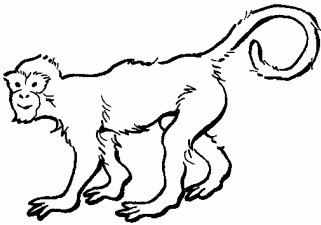


15. This arachnid preys upon small birds and rodents. It can grow to be 12 inches in diameter. It is a bird eating tarantula.

16. The rhea is the largest bird in the Western Hemisphere and can run faster than a galloping horse.

17. The capuchin is the most intelligent of the New World monkeys. They regularly use tools to open up food items.

18. The Exmoor pony is native to England and is a direct descendent of horses that walked onto Britain before it was an island.



19. The howler monkey uses its prehensile tail to swing in trees. The males make a howling sound that can be heard up to a mile away!

20. The Oberhasli goat is a dairy goat imported from the Swiss Alps in 1936. It has a brownish-red coat with black trim.

Thanks for visiting the Santa Ana Zoo! We hope you had fun and learned more about animals from around the world!